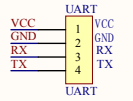
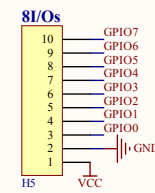
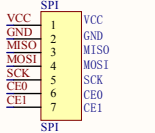
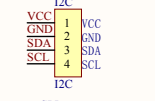
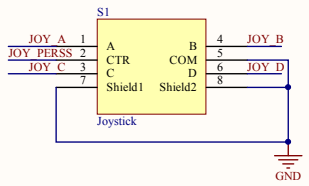
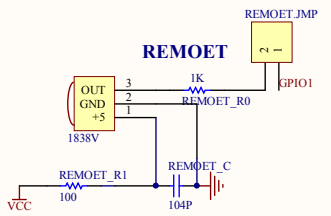
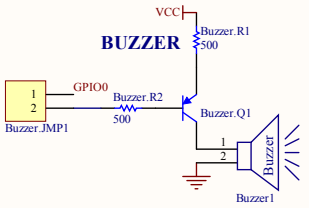
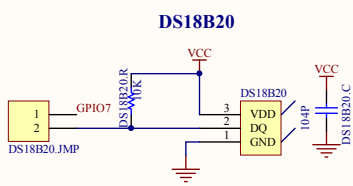
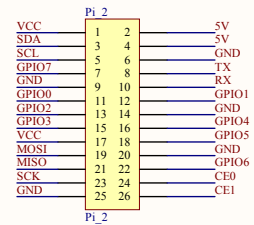


Pi_1=Pi_2 GPIO(0-7)= IO(0-7)



wiringPi	BCM	GPIO	Pi_1	BCM	wiringPi	Pi_2
3	3	3	1	5	5	1
8	var:0/vb:2	4	2	5	5	2
9	var:1/vb:3	5	3	GND	GND	3
7	4	6	4	TX	14	4
GND	GND	7	5	RX	15	5
0	17	8	6	TX	15	6
2	var:2/vb:27	9	7	TX	16	7
3	22	10	8	RX	16	8
3	3	11	9	RX	1	9
12	10	12	10	GPIO1	18	10
13	9	13	11	GND	GND	11
14	11	14	12	GND	GND	12
GND	GND	15	13	GPIO4	23	13
		16	14	GPIO5	24	14
		17	15	GND	GND	15
		18	16	GPIO6	25	16
		19	17	GND	GND	17
		20	18	GPIO6	25	18
		21	19	GND	GND	19
		22	20	GPIO6	25	20
		23	21	GPIO6	25	21
		24	22	GPIO6	25	22
		25	23	GPIO6	25	23
		26	24	GPIO6	25	24
			25	GPIO6	25	25
			26	GPIO6	25	26



Title		
Size	Number	Revision
A3		
Date:	2013-7-30	Sheet of
File:	E:\PCB\DKV511\DKV511_SchDoe	Drawn By:

Comment	Description	Designator	Footprint	LibRef	Quantity
waveshare_logo			WS_symbol_XL	waveshare_logo	1
		1838V	SIP3	1838V	1
Header 2	Header, 2-Pin	Buzzer.JMP1, DS18B20.JMP, REMOET.JMP	SIP2	Header 2	3
PNP		Buzzer.Q1	SOT-23	PNP	1
500	Resistor	Buzzer.R1, Buzzer.R2	0603	R_0805	2
Buzzer		Buzzer1	BUZZER2	Buzzer	1
104	Capacitor	C1	0603	C_0805	1
10uF	Capacitor	C2	ws_3225_1	C_0805	1
104P	Capacitor	DS18B20.C, REMOET_C	0603	Cap	2
10K	Resistor	DS18B20.R	0603	R_0805	1
ds18b20		DS18B20	SIP3	ds18b20	1
Header 10	Header, 10-Pin	H5	SIP10_LyingMother	Header 10	1
Header 3X2		Header3X2	SIP3X2	Header 3X2	1
I2C	Header, 4-Pin	I2C	SIP4_LyingMother	Header 4	1
Header 5X2	Header, 5-Pin, Dual row	JOYSTICK.P1	SIP5 X2	Header 5X2	1
LED_0805		L1, L2, L3, L4, L5, L6, L7, L8, POW LED1	0805_LED	LED_0805	9
RES_ADJ		LCD.R1	RESADJ	RES_ADJ	1
Header 20X2	Header, 20-Pin, Dual row	LCD1	LCD22	Header 20X2	1
Header 16	Header, 16-Pin	LCD1602	SIP16	Header 16	1
Header2X2		lcd_jmp	Header 2x2	Header2X2	1
LED JMP	Header, 8-Pin, Dual row	LEDJMP.P1	SIP8 x2	Header 8X2	1
luosihole L		luosihole L1, luosihole L2, luosihole L3, luosihole L4	luosikong L	luosihole L	4
Pi_1	Header, 13-Pin	Pi_1	Header 13X2	Header 13X2	1
Pi_2	Header, 13-Pin	Pi_2	Header 13X2	Header 13X2	1
5V	Power5	Power1	PWR_5V	Power5	1
switch		PWR.S1	SWITCH2-1	switch2-1	1
330	Resistor	PWRLED.R1	0603	R_0805	1
R_0603	Resistor	R1, R2, R3, R4, R5, R6, R7, R8	0603	R_0603	8
1K	Resistor	REMOET_R0	0603	R_0603	1
100	Resistor	REMOET_R1	0603	R_0805	1
Joystick		S1	Joystick2	Joystick	1
SPI	Header, 7-Pin	SPI	SIP7_LyingMother	Header 7	1
UART	Header, 4-Pin	UART	SIP4_LyingMother	Header 4	1